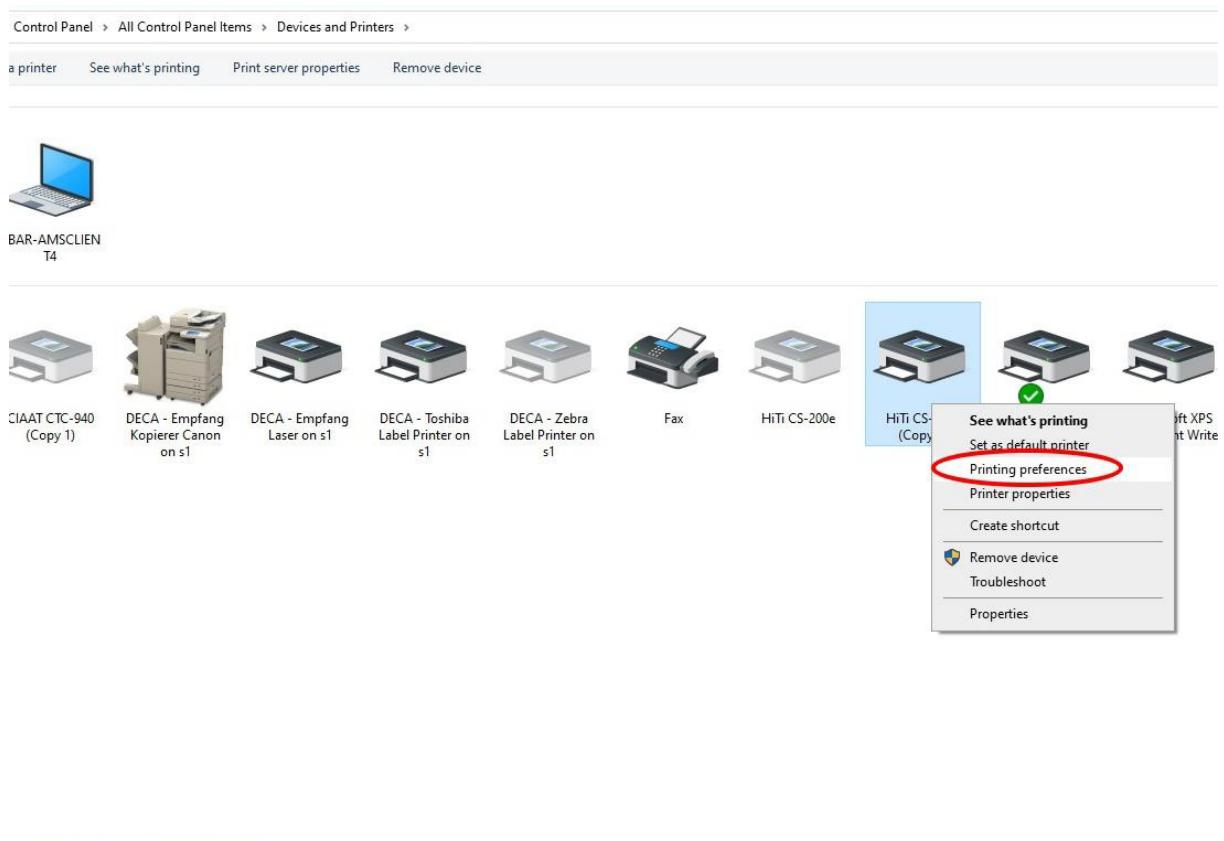


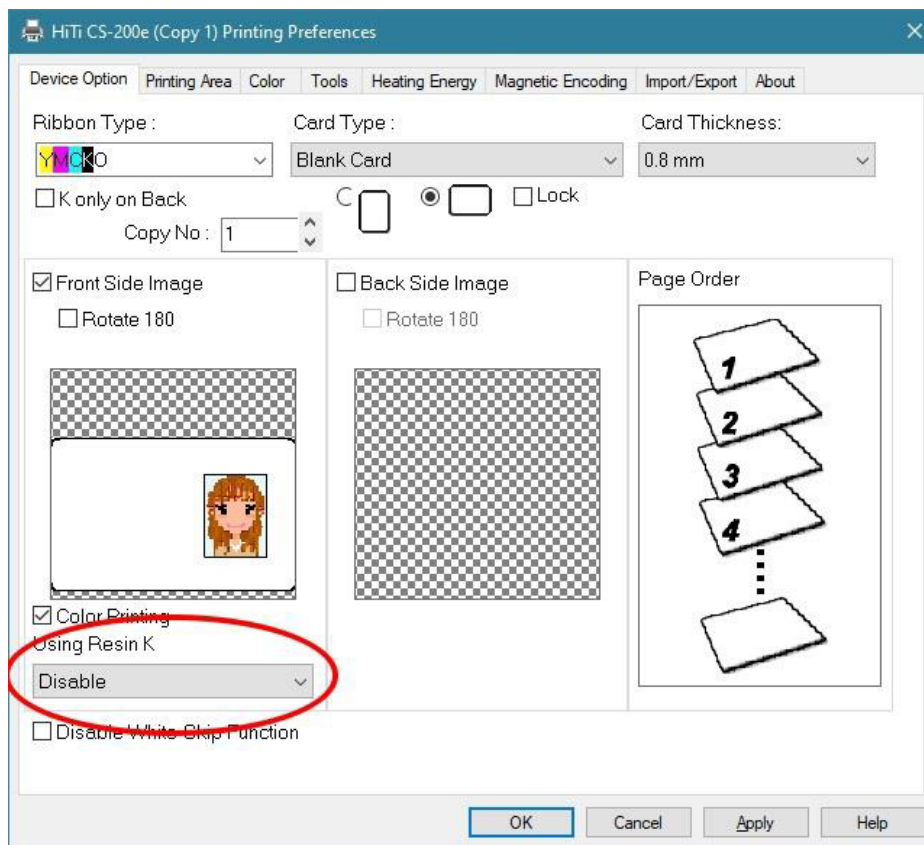
ECP-XL -> Improve the print quality -> Black by YMC



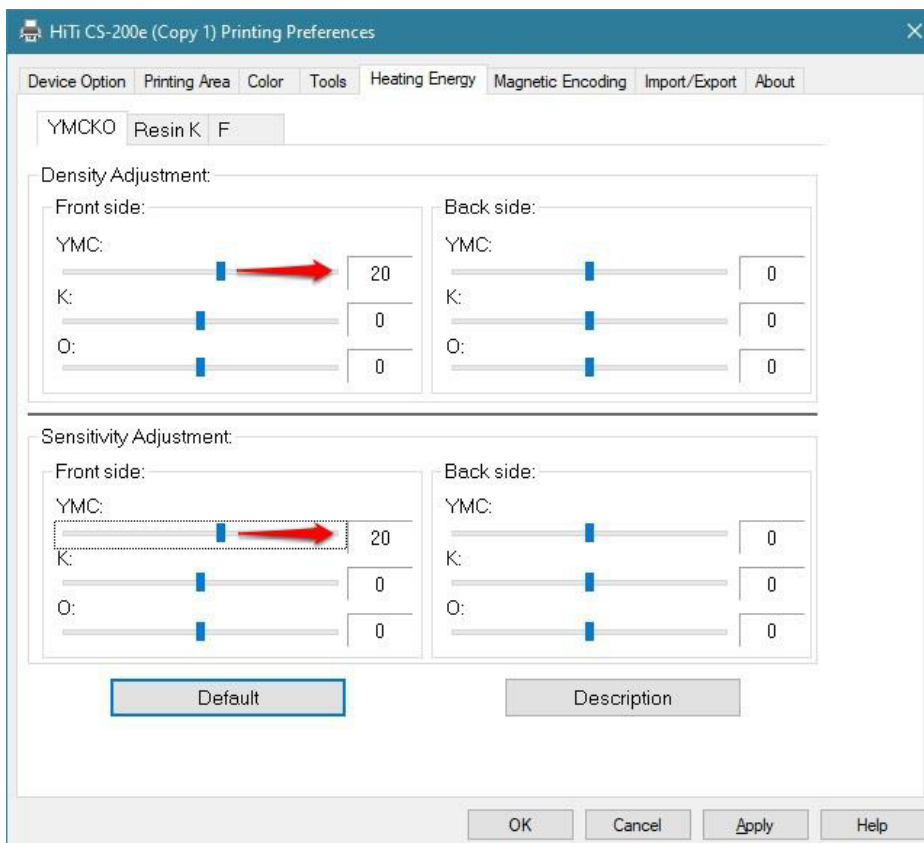
Open Hiti CS-200e Driver Tools



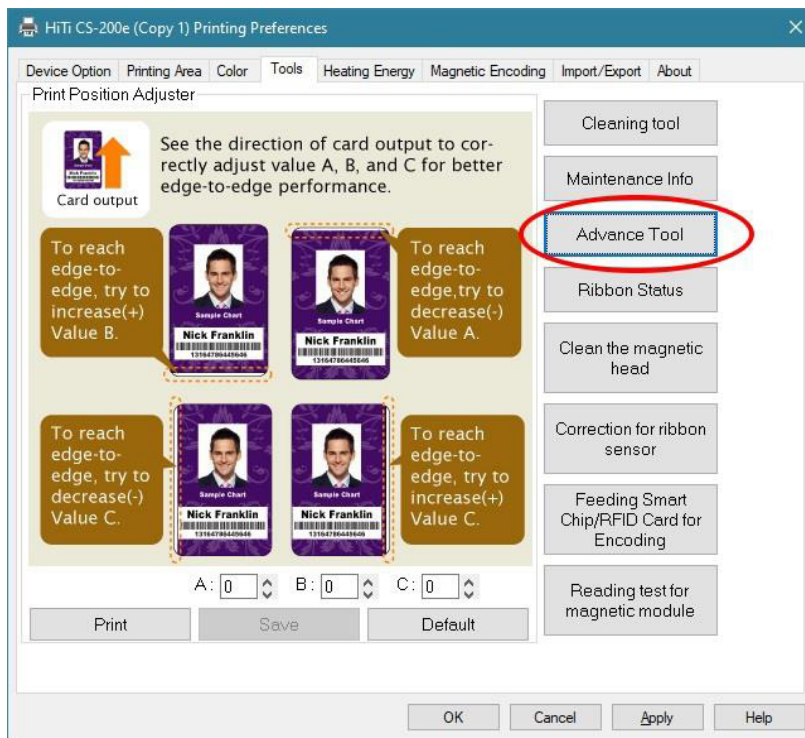
Using Resin K -> Black Disable



Increase Heating Energy -> YMCKO -> Density YMC 20 -> Sensitivity YMC 20



Open Advance Tool



Motor Speed Adjustment -> Set #1= +2 -> #2= -2

If spots are still visible -> Set #1= +5 -> #2= -5

