

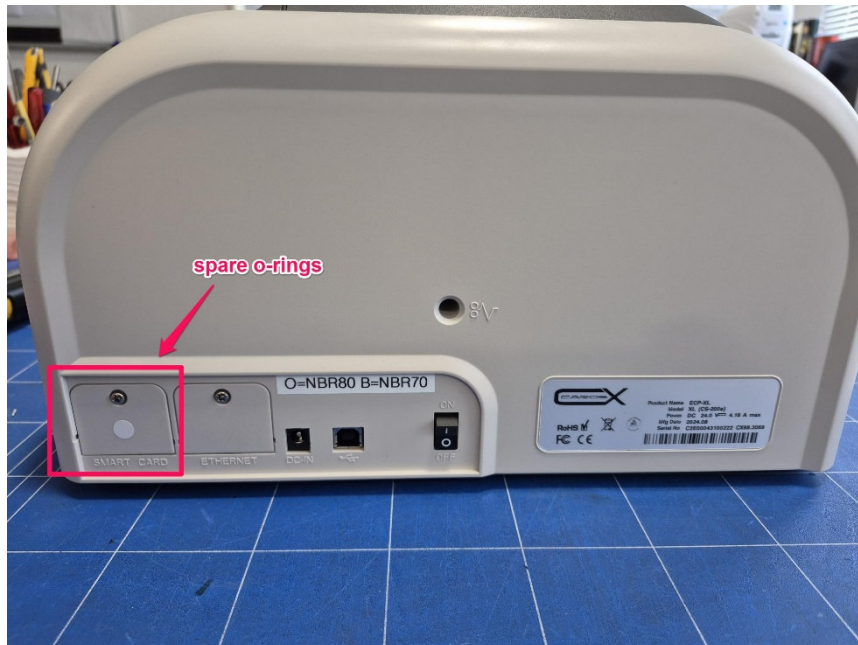


# O-ring replacement

## Table of contents

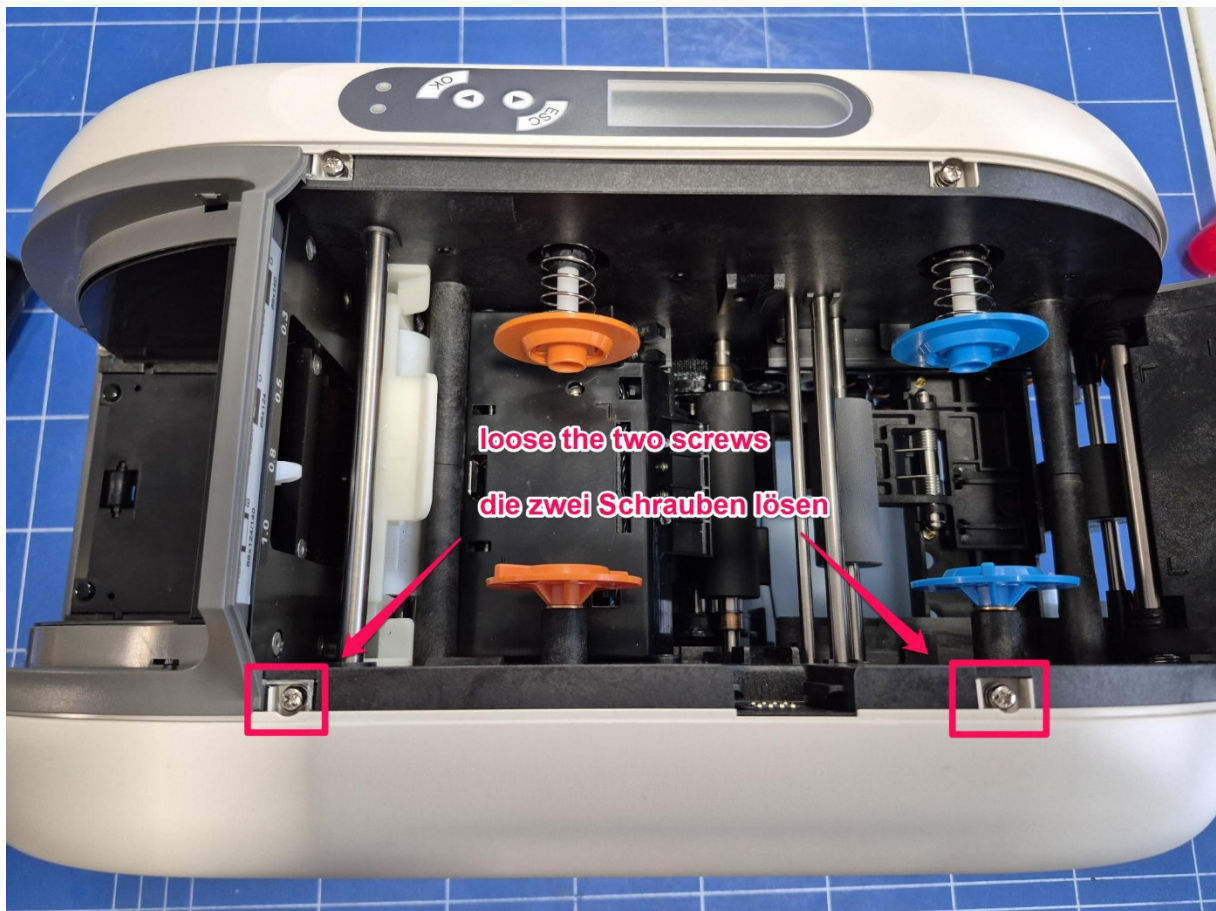
Site 2	Where to find the O-Rings
Site 3	Step 1
Site 4	Step 2
Site 5	Step 3
Site 6	Step 4
Site 7	Step 5
Site 8	Reassembling

Every rental printer comes with a set of spare O-rings. You can find these on the back of the printer. Simply loosen the screw on the plate marked with a white dot. Then pull out the plate with the O-rings as shown in the following images:



There you will find two bags labeled "B=NBR..." and "O=NBR...". These are the O-rings for the orange and blue sides, respectively. Further explanations can be found in the rest of the instructions.

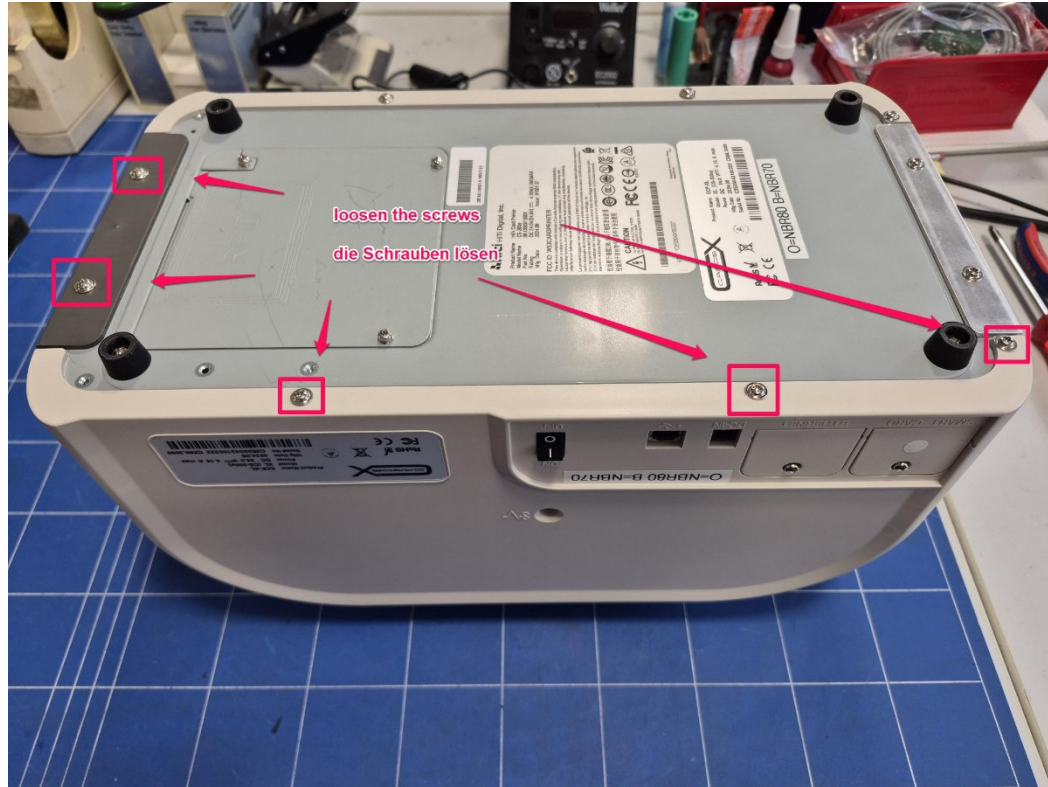
**Step 1:** To replace the O-rings, you'll need to loosen the screws on the case. To do this, we only need to remove the side of the case without the display. To do this, open the cover and loosen the two screws:



Remove the screws and set them aside.

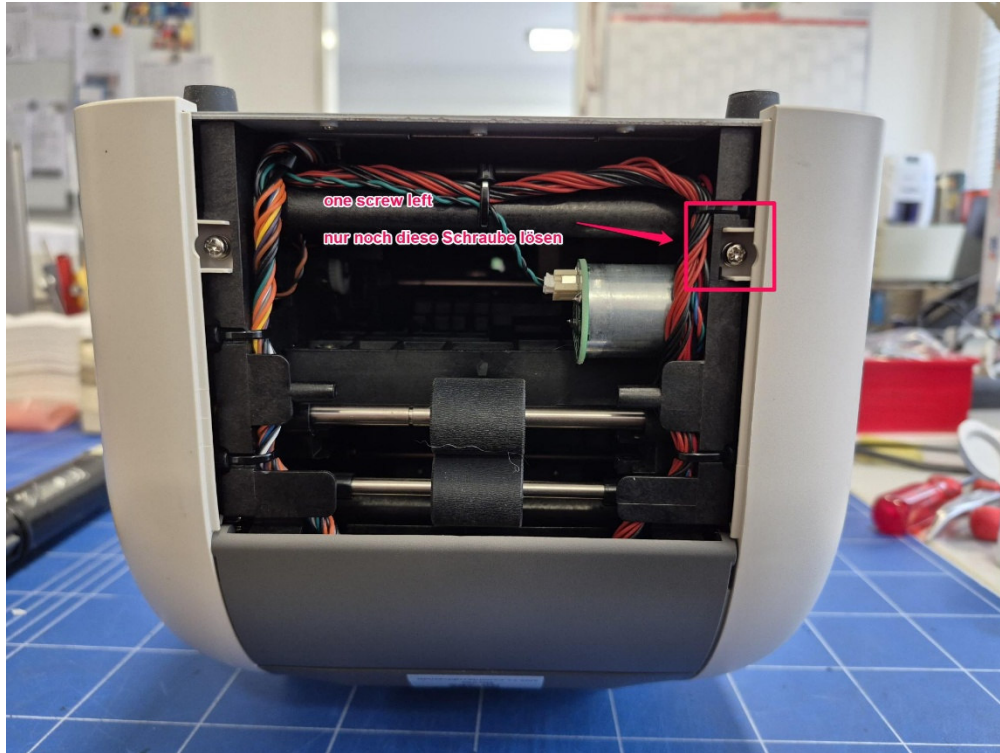
Then you can close the cover again and turn the printer over so you can see the base plate.

**Step 2:** If you look at the base plate, there are 5 screws that you also have to loosen:

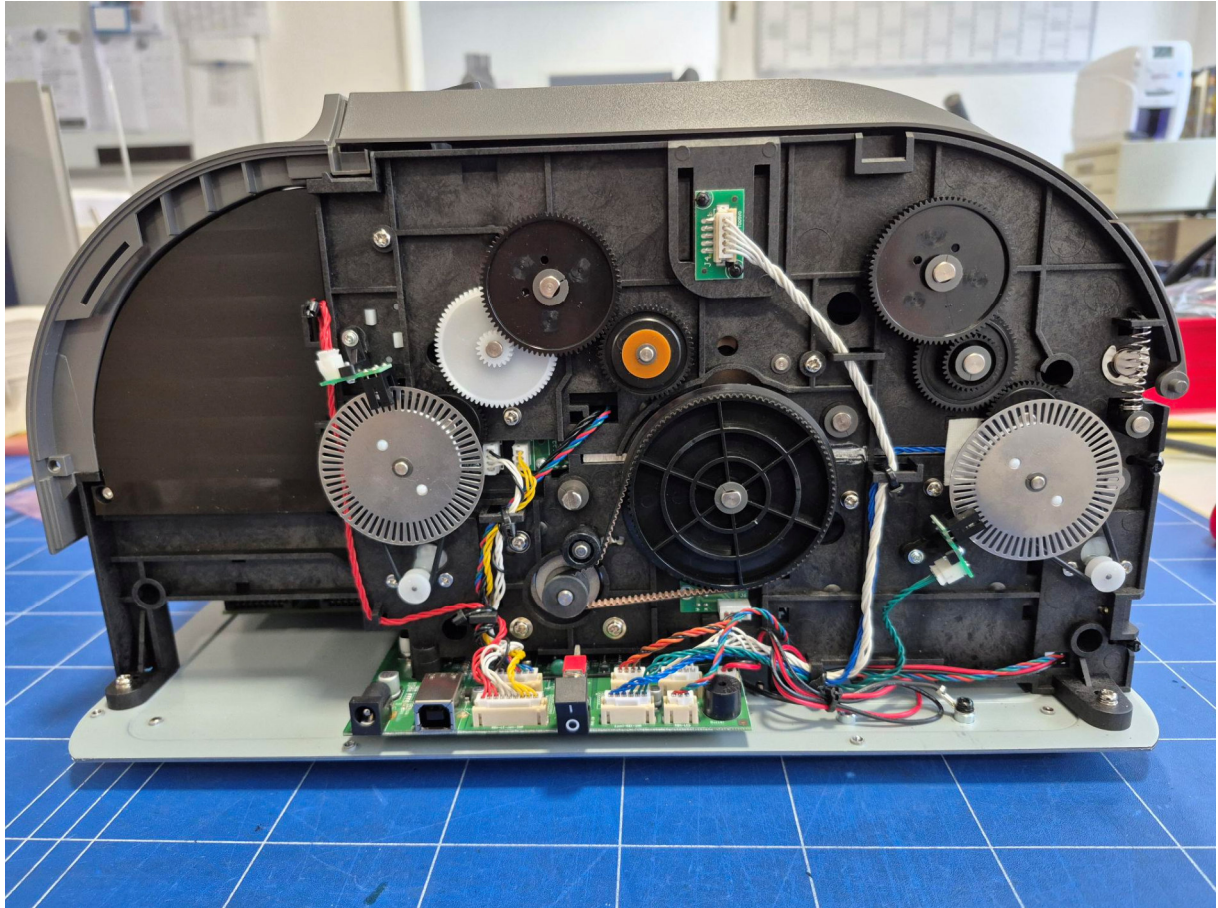




Once the screws are also gone, you can remove the dark grey front panel and remove the last screw:



**Step 3:** Now we can easily remove the side of the case without the display. It will look like this:



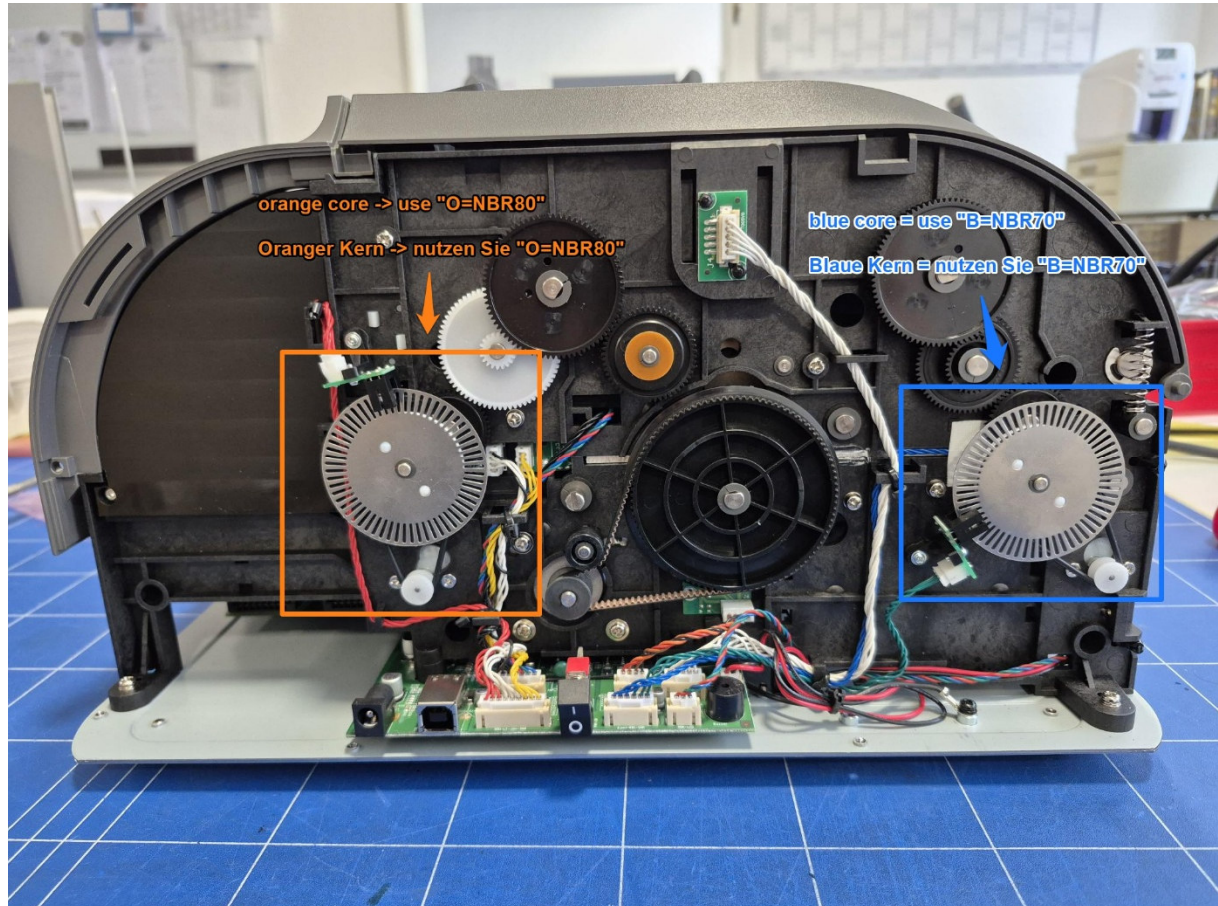
Be careful, there is a part that might fall out because it is only clamped between the two side parts:



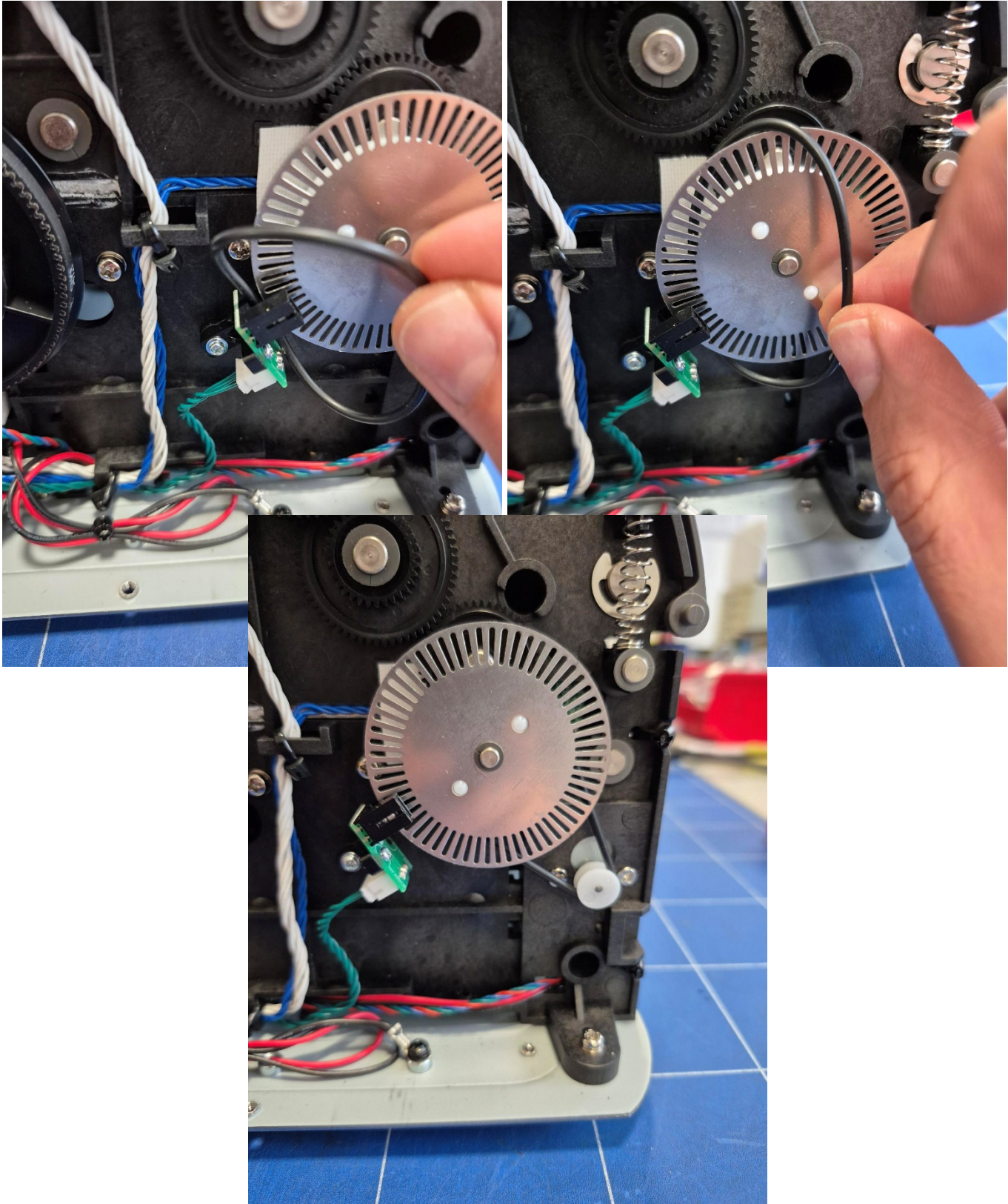
You can safely remove the part and set it aside. Just don't forget to put it back in when reassembling.



**Step 4:** Now we need to define which O-ring might be torn and needs to be replaced. For example, "O=NR80" goes on the side with the orange core, and "B=NR70" goes on the side with the blue core:



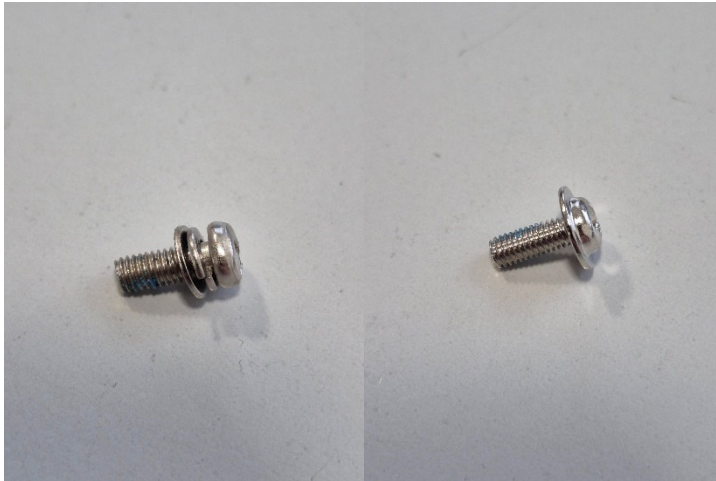
**Step 5:** To do this, simply take the new O-ring out of the bag, thread it past the fork light barrier and pull it over the pinion so that it looks like this:



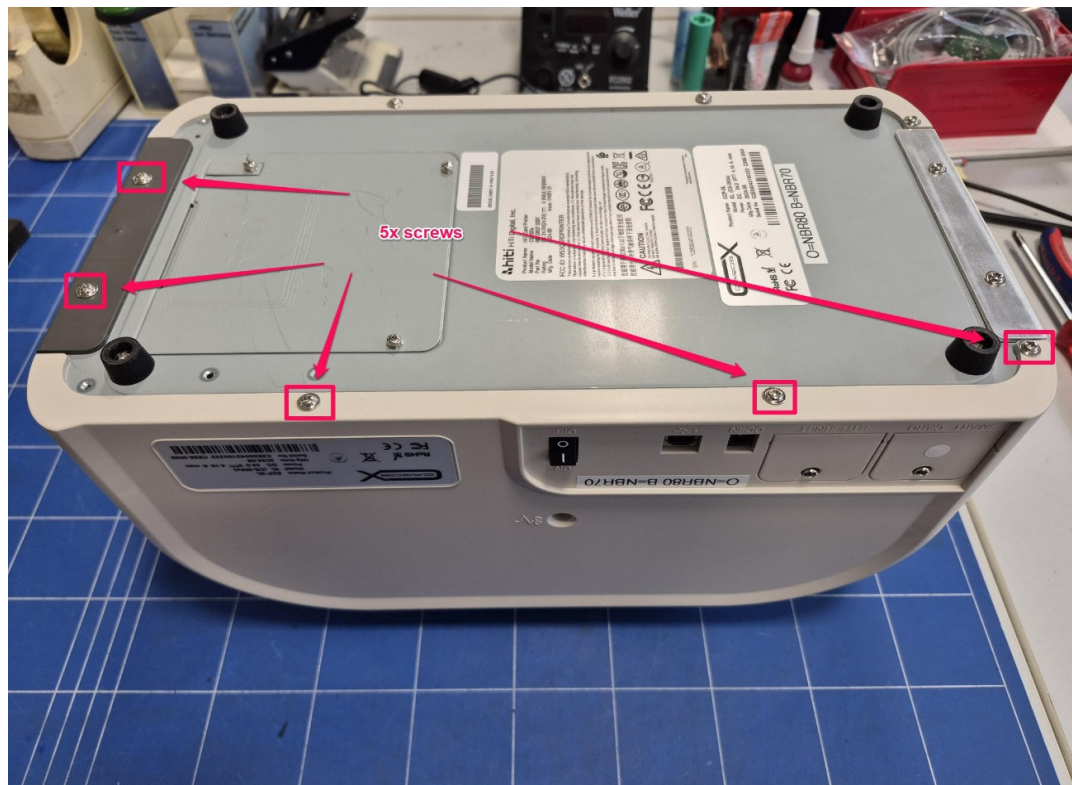


You can now reassemble the printer.

Note that there are two different screws.



You need exactly 5 of the right screw, these are screwed to the housing from below, so here:



The other screws are placed in the remaining places accordingly.